

**NORTHAMPTONSHIRE
ARCHAEOLOGICAL SOCIETY
AGM**

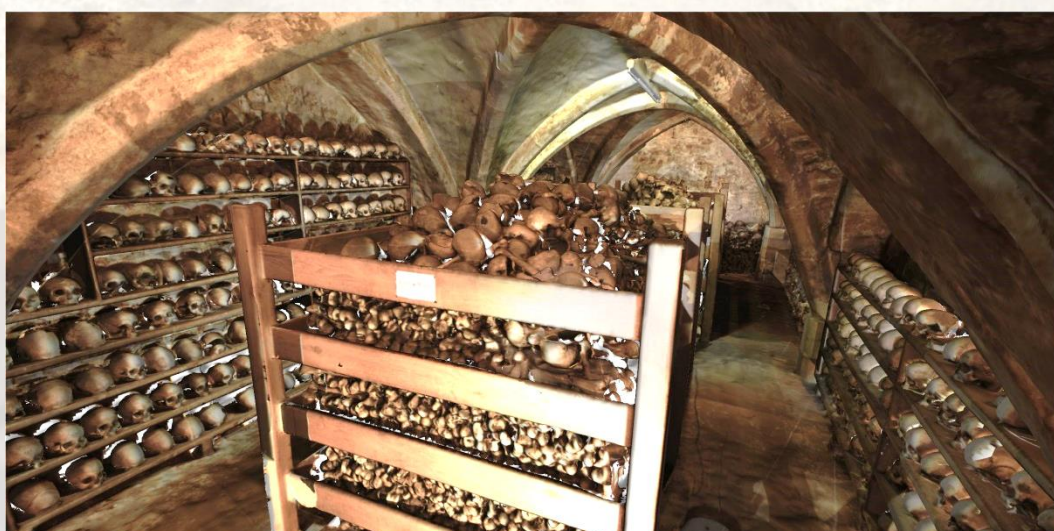
Tuesday, 14 November 2017

Public Lecture

The Rothwell Charnel Chapel Project

**Multidisciplinary Explorations of a
unique Medieval Charnel Chapel and its contents**

**Elizabeth Craig-Atkins
Senior Lecturer in Human Osteology
University of Sheffield**



Tea and coffee from 6.30, NAS AGM from 7.00pm

Lecture from c.7.20pm

**at the The Humfrey Rooms, NNHS,
10 Castilian Terrace, Northampton NN1 1LD**